



DAS NOAH+ STIEGE 2 / TOP 5

Adresse: 1130 Wien - Lainzerstraße 172/2/2
Zimmer: 2
Geschoß: 1. OG
Fläche: 52,96 m²
Freifläche(n): 11 m² Balkon
Ausrichtung: Osten
Fertigstellung: Geplant Frühling 2024

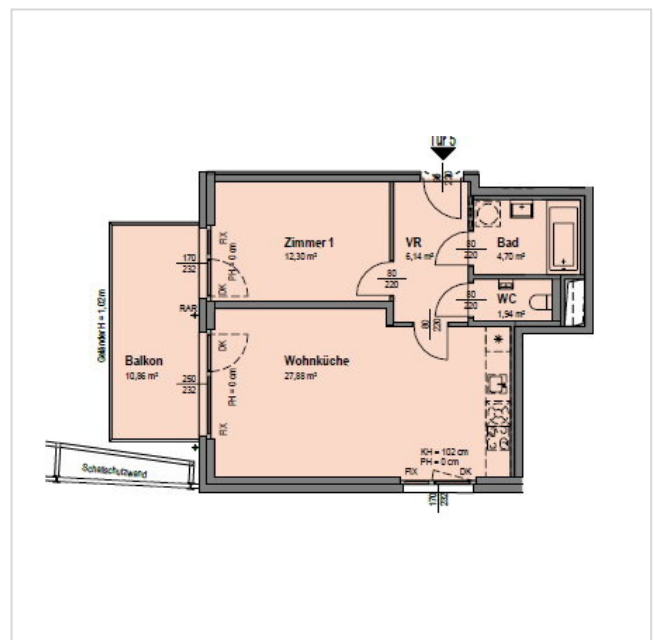
Kaufpreis brutto: € 392.500
Monatliche Kosten: € 196,39

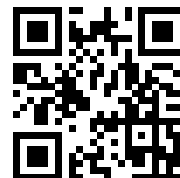
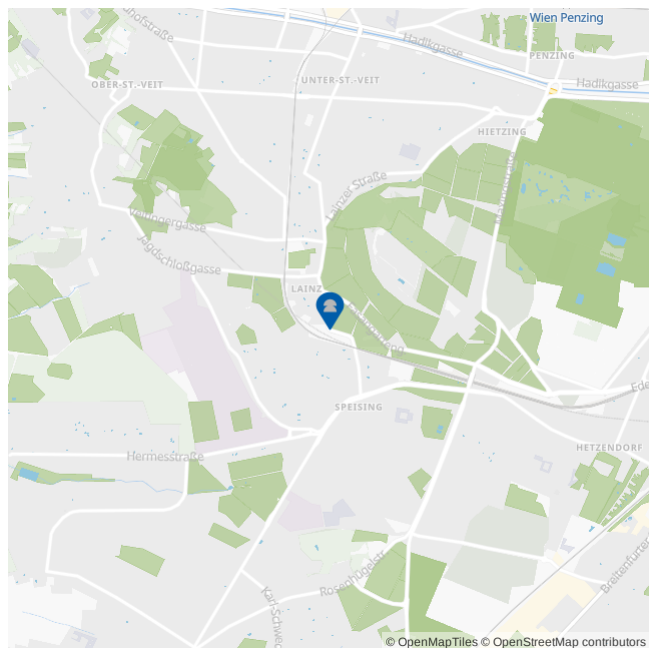
Nutzungsart: Wohnen (Eigentum)
HWB: 27,60 kWh/m²a
f_{GEE} 0,75





PROJEKT BILD



GRUNDRISS



**LAGE & UMGEBUNG** | 1130 Wien - Lainzerstraße 172/2/2

-  Buslinien 56A,56B,N60 < 100 m
Straßenbahn 60,62 < 100 m
-  Supermärkte < 500 m
-  Krankenhaus Hietzing < 2 km
-  Öffentl. Parks < 1 km