



DAS NOAH+ STIEGE 1 / TOP 5

Adresse: 1130 Wien - Lainzerstraße 172/1/1

Zimmer: 2

Geschoß: 1. OG

Fläche: 50,45 m²

Freifläche(n): 7 m² Balkon

Ausrichtung: Osten, Westen

Fertigstellung: Geplant Frühling 2024

Kaufpreis brutto: € 367.300

Monatliche Kosten: € 182,36

Nutzungsart: Wohnen (Eigentum)

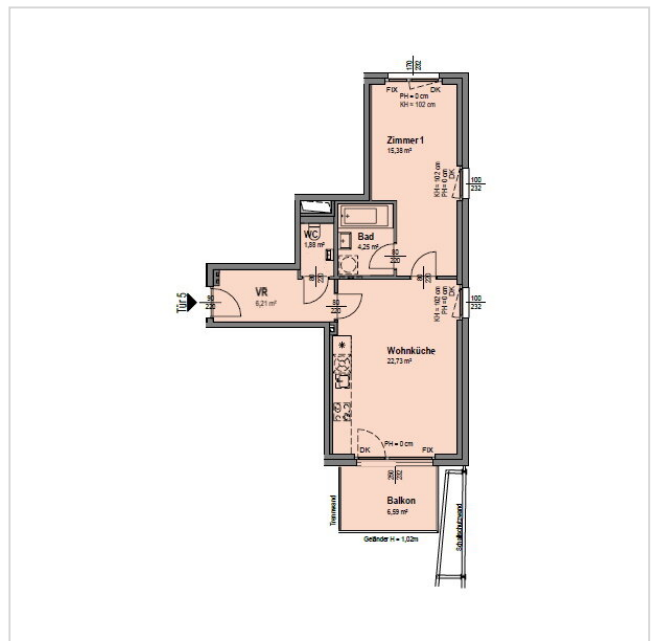
HWB: 29,40 kWh/m²a

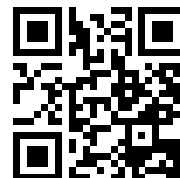
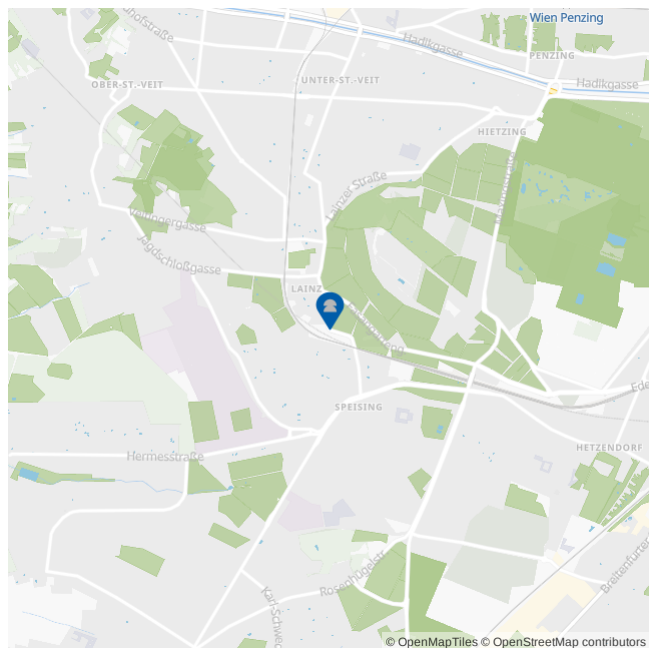
f_{GEE} 0,76





PROJEKTBIKD



GRUNDRISS



**LAGE & UMGEBUNG** | 1130 Wien - Lainzerstraße 172/1/1

-  Buslinien 56A,56B,N60 < 100 m
Straßenbahn 60,62 < 100 m
-  Supermärkte < 500 m
-  Krankenhaus Hietzing < 2 km
-  Öffentl. Parks < 1 km