

DAS NOAH+ STIEGE 2 / TOP 2

Adresse: 1130 Wien - Lainzerstraße 172/2
Zimmer: 2
Geschoß: EG
Fläche: 52,96 m²
Freifläche(n): 39 m² Garten | 11 m² Terrasse
Ausrichtung: Osten
Fertigstellung: Geplant Frühling 2024

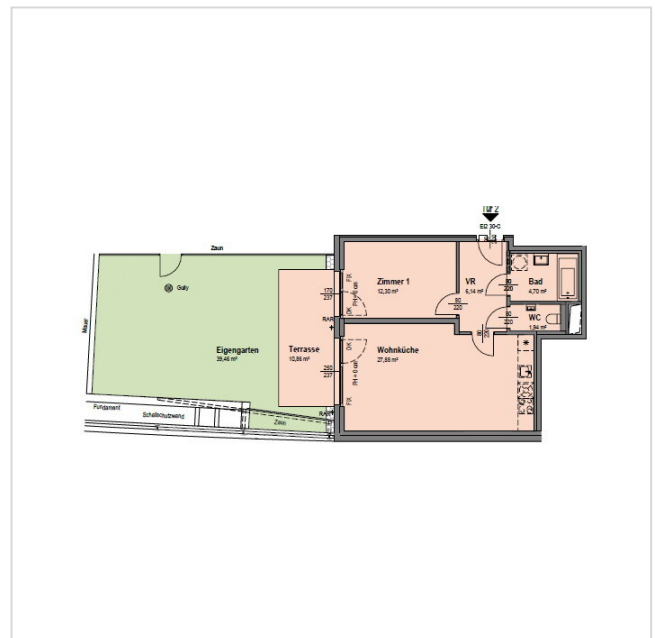
Kaufpreis brutto: € 412.700
Monatliche Kosten: € 196,39

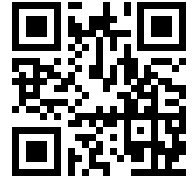
Nutzungsart: Wohnen (Eigentum)
HWB: 27,60 kWh/m²a
f_{GEE} 0,75

PROJEKTBIKD

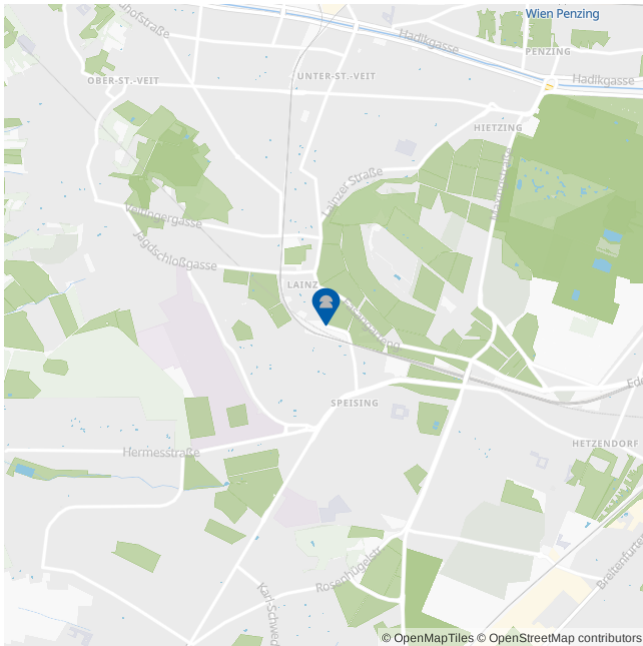






GRUNDRISS





LAGE & UMGEBUNG | 1130 Wien - Lainzerstraße 172/2



-  Buslinien 56A,56B,N60 < 100 m
Straßenbahn 60,62 < 100 m
-  Supermärkte < 500 m
-  Krankenhaus Hietzing < 2 km
-  Öffentl. Parks < 1 km