

DAS NOAH+ STIEGE 1 / TOP 15

Adresse: 1130 Wien - Lainzerstraße 172/1
Zimmer: 3
Geschoß: 4. OG
Fläche: 81,73 m²
Freifläche(n): 165 m² Terrasse
Ausrichtung: Osten, Süden, Westen
Fertigstellung: Geplant Frühling 2024

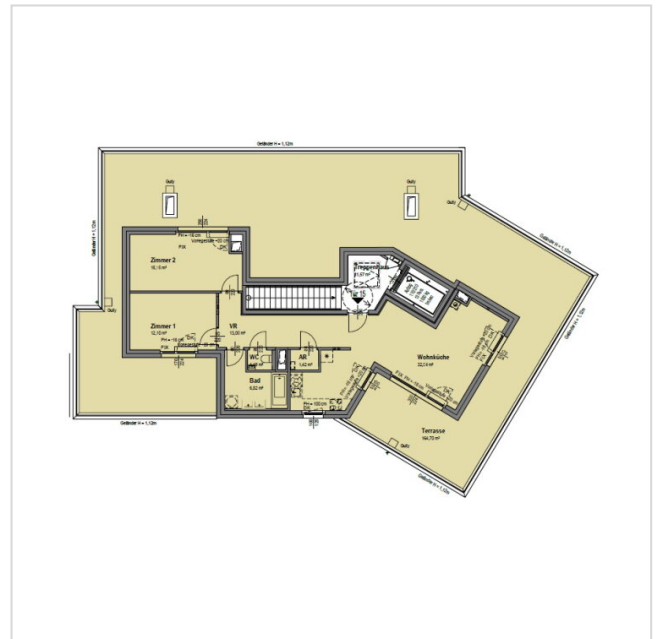
Kaufpreis brutto: € 952.500
Monatliche Kosten: € 406,81

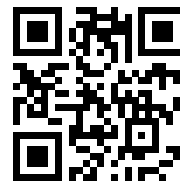
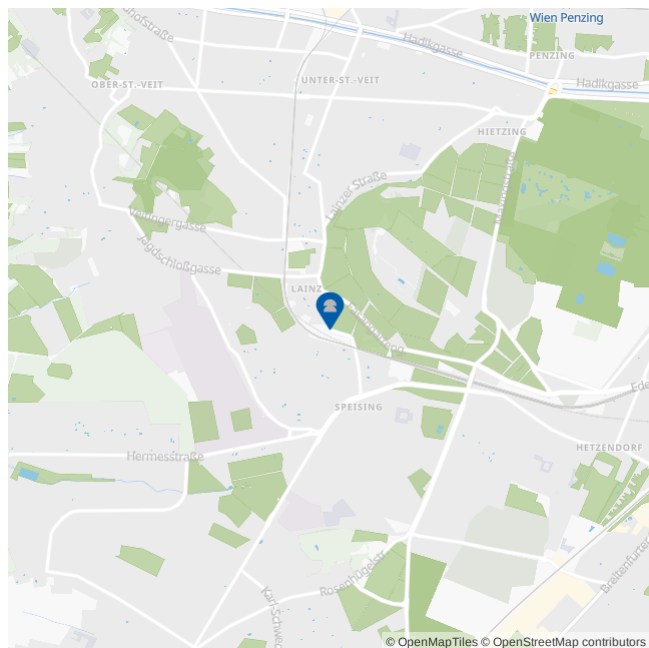
Nutzungsart: Wohnen (Eigentum)
HWB: 29,40 kWh/m²a
f_{GEE} 0,76





PROJEKTBIKD



GRUNDRISS



**LAGE & UMGEBUNG** | 1130 Wien - Lainzerstraße 172/1

-  Buslinien 56A,56B,N60 < 100 m
Straßenbahn 60,62 < 100 m
-  Supermärkte < 500 m
-  Krankenhaus Hietzing < 2 km
-  Öffentl. Parks < 1 km