

DAS NOAH+ STIEGE 1 / TOP 6

Adresse: 1130 Wien - Lainzerstraße 172/1
Zimmer: 2
Geschoß: 1. OG
Fläche: 49,02 m²
Freifläche(n): 6 m² Balkon
Ausrichtung: Osten
Fertigstellung: Geplant Frühling 2024

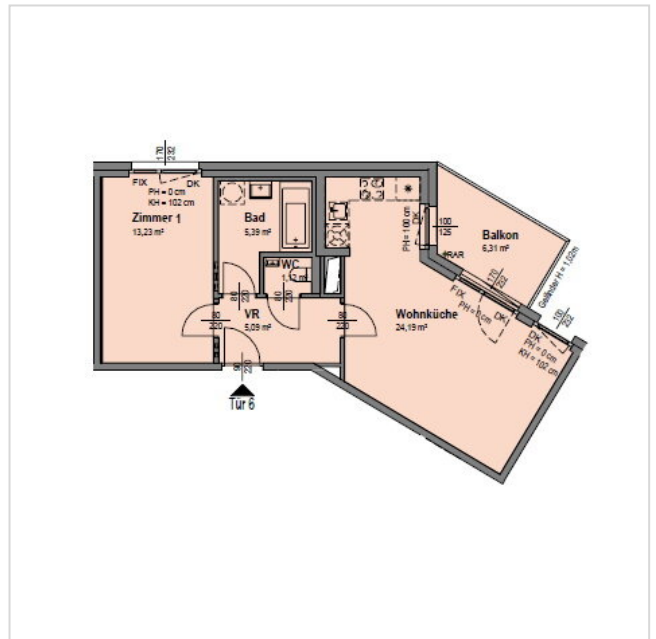
Kaufpreis brutto: € 349.100
Monatliche Kosten: € 175,35

Nutzungsart: Wohnen (Eigentum)
HWB: 29,40 kWh/m²a
f_{GEE} 0,76

PROJEKTBIKD

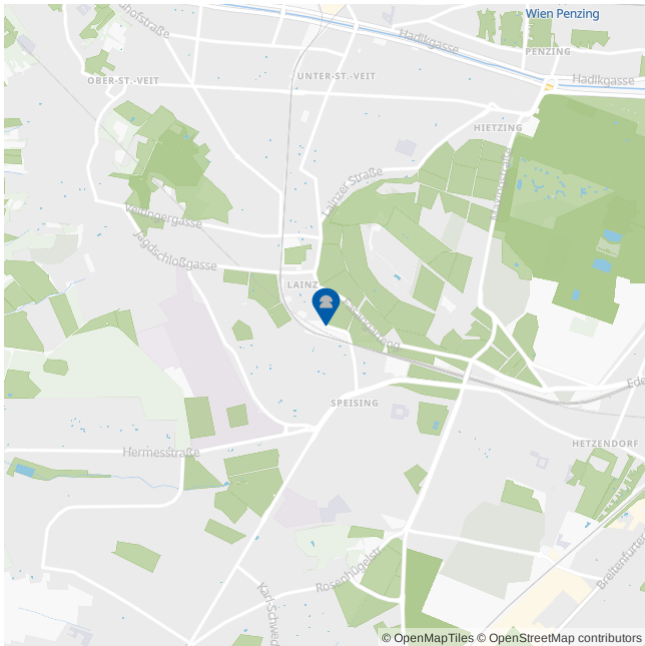






GRUNDRISS





LAGE & UMGEBUNG | 1130 Wien - Lainzerstraße 172/1



-  Buslinien 56A,56B,N60 < 100 m
Straßenbahn 60,62 < 100 m
-  Supermärkte < 500 m
-  Krankenhaus Hietzing < 2 km
-  Öffentl. Parks < 1 km